

P-50A

Compact Pressure Transducer

Analog output

- Pressure range - 0.1~0.9MPa / - 0.1~2.9MPa
- Output current 4~20mA
- Superior Long term Stability
- Temperature Compensated
- Linear Amplified Output
- Excellent Repeatability & Hysteresis

P-50A series Long term minimization of these errors is maintained after millions of full scale overpressure cycles, making electronic set point virtually drift-free. Use of ceramic materials in the sensing element and its mounting provides excellent resistance to most liquids and chemicals. Ruggedness and reliability are also enhanced by a Brass housing to resist corrosion pressure sealing for media compatibility is provided by selection of welding Sealing type. metal sensing element contains and integral, reliable, solid state, custom hybrid circuit signal conditioner. This circuit is digital interface can be used for a simple PC-controlled calibration procedure, in order to program a set of calibration coefficients into an on-chip EEPROM and without the cost overhead associated with trimming by external devices or a laser.

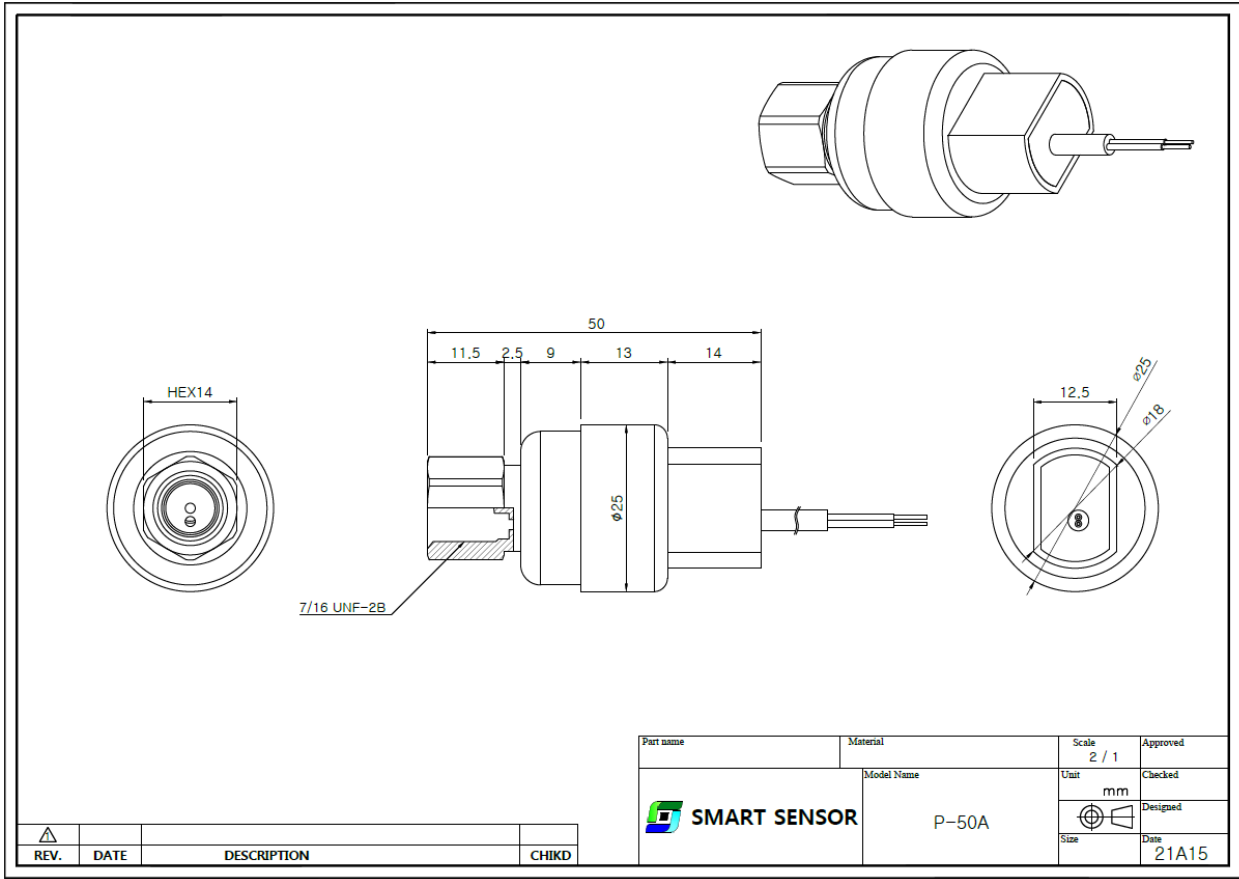


TYPICAL APPLICATIONS

- ✓ System air conditioners
- ✓ Industrial refrigerators
- ✓ Air compressors

General SPEC		
Working Pressure Range	- 0.1~0.9MPa	- 0.1~2.9MPa
Pressure Resistance	5.25	7.5
Burst Pressure	≥17.5 x F.S.	≥25 x F.S.
Output Current	4~20mA	
Electric connection	Cable type	
Operating Temp. Range	-40 to 80℃	
Compensated Temp. Range	-20 to 80℃	
Total Error Accuracy [Typical/25℃]	≤±0.5%F.S	
Total Error Accuracy [-40 to 80℃]	≤±0.8%F.S	
Hysteresis and repeatability	±0.1 %F.S [Typical] / ±0.3 %F.S [MAX]	
Process connection	7/16-20UNF-2B	
Body material	Brass	
Power Voltage	10~30VDC	
Insulation resistance	Greater than 100MΩ (500VDC)	
Electric strength	500VAC (1minutes between case and all terminals tied)	
Enclosure	IP67	
Response time 10~90%	≤2ms	
Mechanical life cycle	5,000,000/cycle	
Circuit protection	Reverse polarity protected. (Power supply +/-)	
Shock proof	1000m/s² (6ms or less, X, Y, Z 3times for each at constant temp.)	
Vibration proof	200m/s² (10~2000Hz, X:4h, Y:2h, Z:2h at constant temp.)	
Weight	55g (with cable 2M)	

Dimensions (mm)



Wires	PIN No.	Description
2 wire	RED	POWER(+)
	BLACK	POWER(-)
Body	Color	Pressure Range
Housing	WHITE	- 0.1~0.9 [MPa]
	RED	- 0.1~2.9 [MPa]

(P)-(V)out The diagram of Pressure and output

